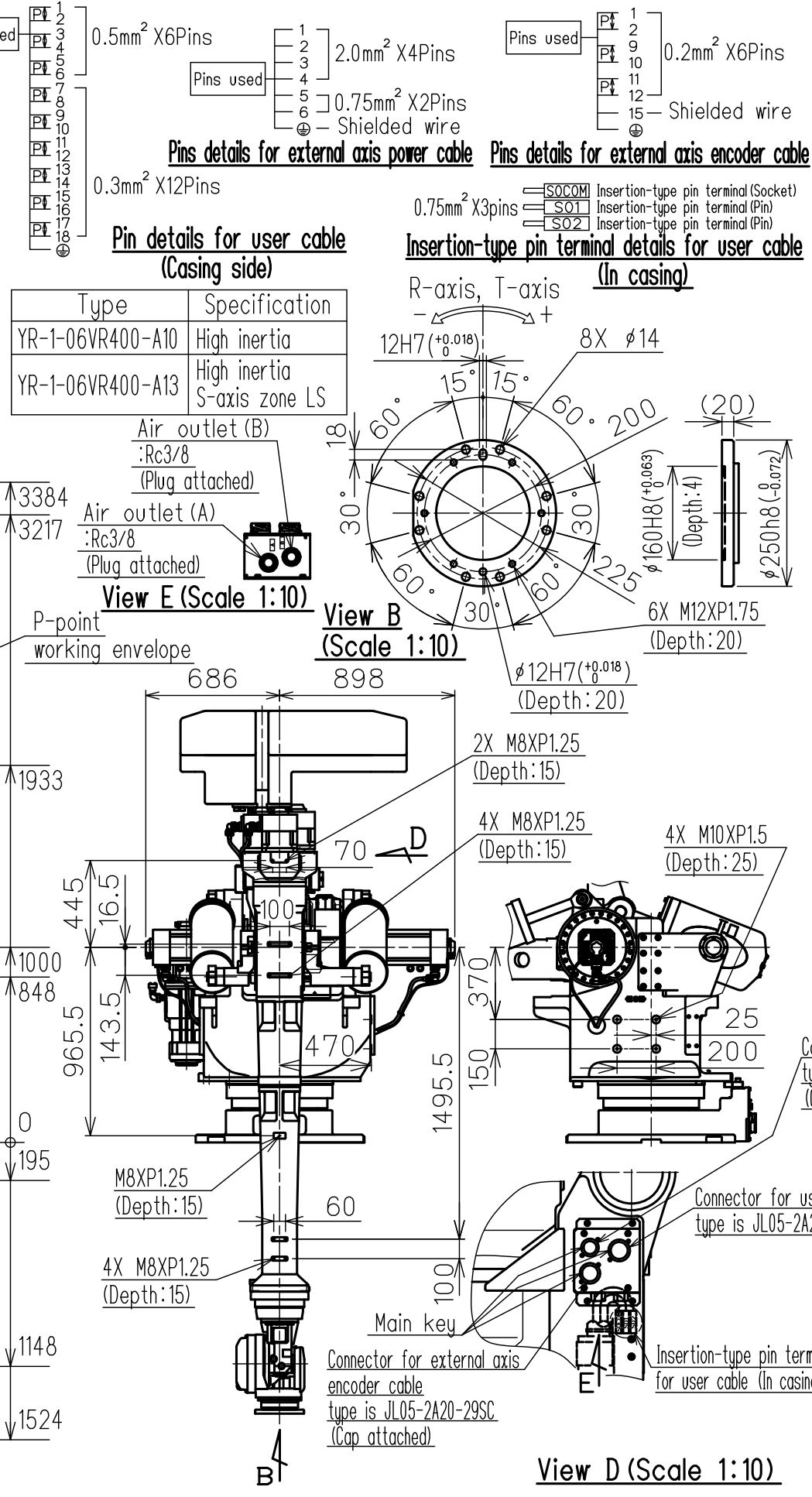
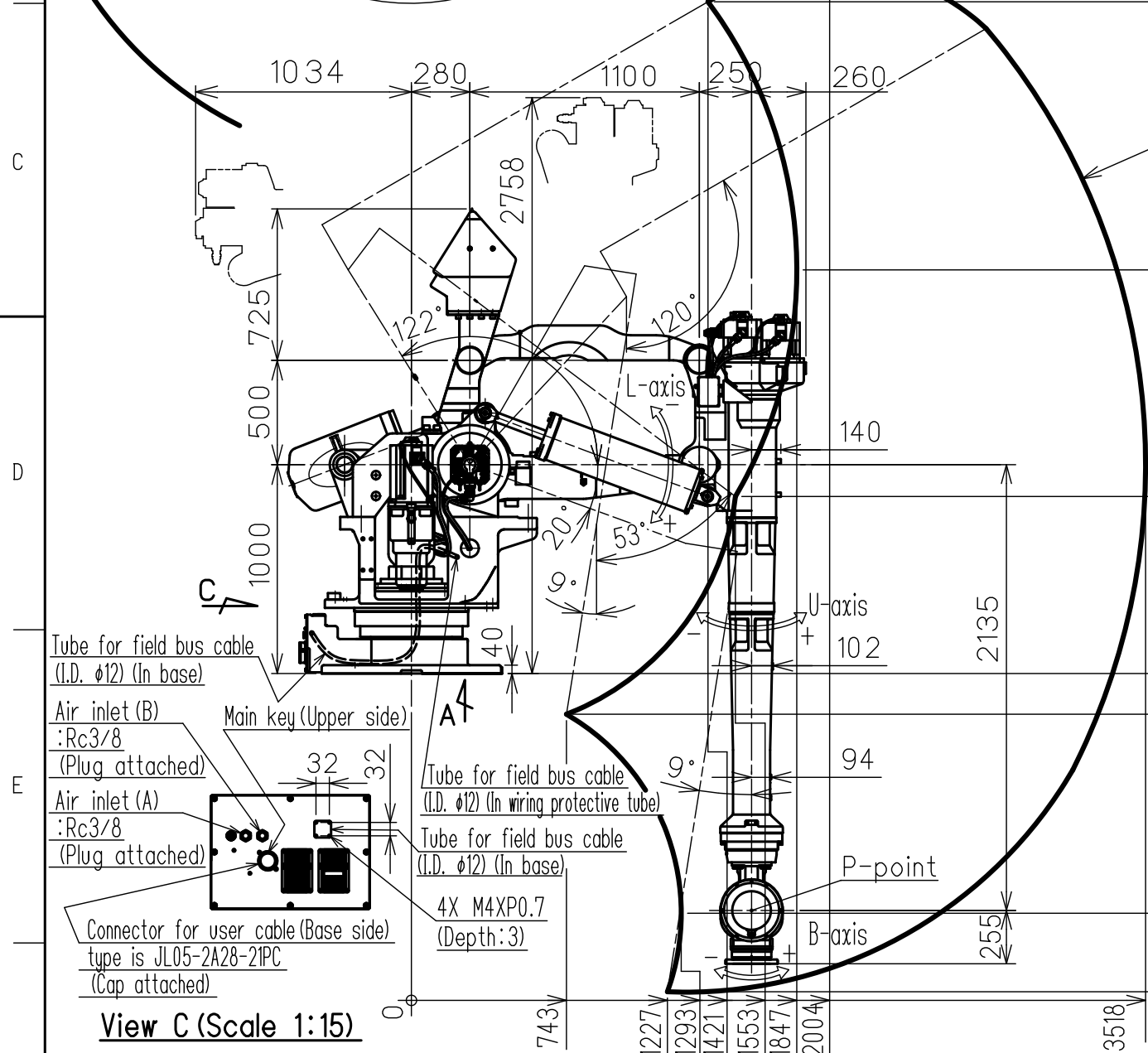
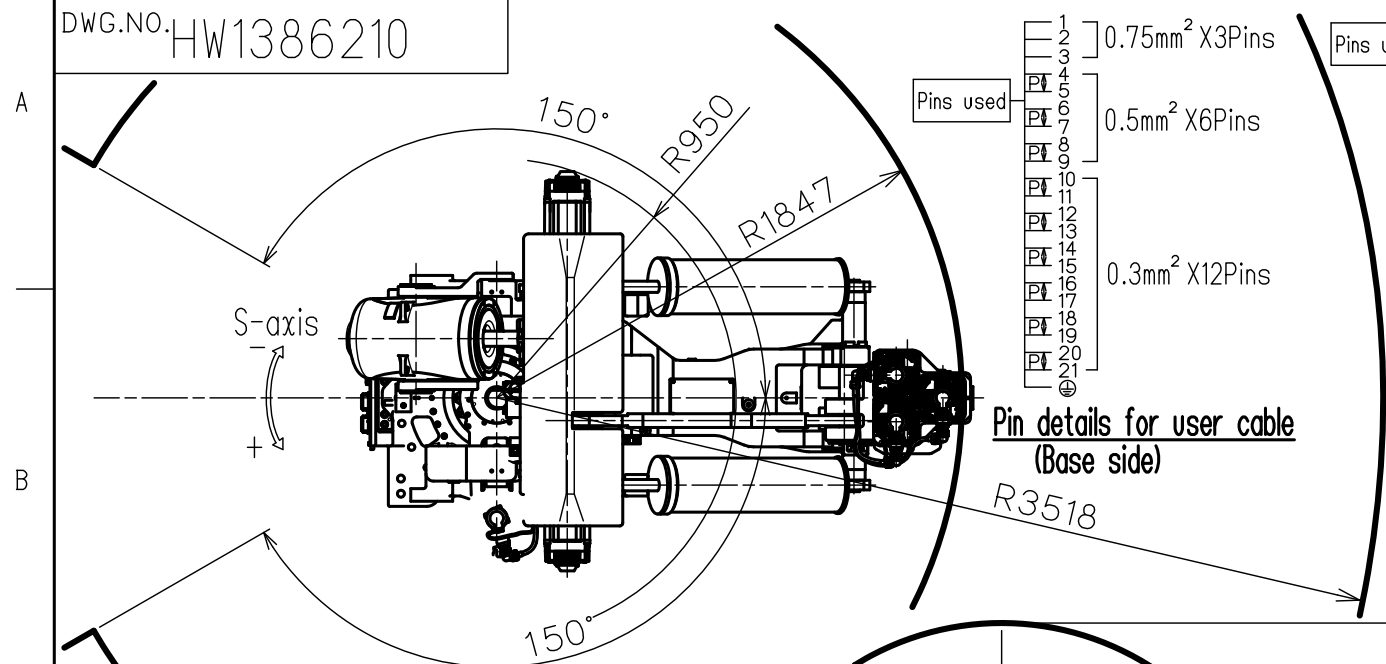


DWG.NO. HW1386210



Item	Model	MOTOMAN-GP400R
Configuration		Vertically articulated
Degree of freedom		6
Payload	Wrist	400 kg
	On U-arm	10 kg
Repeatability (*1)		0.1 mm
Range of motion	S-axis (Turning)	-150° - +150°
	L-axis (Lower arm)	-122° - +20°
	U-axis (Upper arm)	-9° - +120°
	R-axis (Roll)	-360° - +360°
	B-axis (Pitch/Yaw)	-120° - +120°
	T-axis (Twist)	-360° - +360°
Maximum speed	S-axis	1.40rad/s, 80°/s
	L-axis	1.05rad/s, 60°/s
	U-axis	0.87rad/s, 50°/s
	R-axis	1.40rad/s, 80°/s
	B-axis	1.40rad/s, 80°/s
	T-axis	1.83rad/s, 105°/s
Allowable moment	R-axis	1960 N·m (200 kgf·m)
	B-axis	1960 N·m (200 kgf·m)
	T-axis	833 N·m (85 kgf·m)
Allowable inertia (GD ² /4)	R-axis	280 kg·m ²
	B-axis	280 kg·m ²
	T-axis	230 kg·m ²
Mass		3560 kg
Protection rating	Body: IP30 Wrist: IP67	
Mounting method		Shelf-mounted
Ambient conditions	Temperature	0°C - +45°C
	Humidity	20%RH - 80%RH (No-condensing)
	Vibration acceleration	4.9m/s ² (0.5G) or less
	Altitude	1000m or less
	Flatness for installation	0.5mm or less
	Others	Free from dirt, dust, oil soot, or water Free from explosive and corrosive gas or liquid Free from excessive electrical noise (plasma) Free from strong magnetic field
Power requirements		7.0KVA
Applicable controller		YRC1000

*1 Repeatability conforms to ISO 9283.
*2 The manipulator is in the home position in this drawing.
Units: mm